

3 Bedroom Semi Detached House For Sale

€370,000 Negotiable

Emba, Paphos
New Build

Key Facts

- 3 Beds
- 2 Baths
- 165 m² Covered Area
- 219 m² Land Size
- New Build
- Title Deed: Available

ID: 23438



Indoor Features

- Fitted Kitchen
- Guest Toilet
- Open-plan
- Provision for Air Conditioning
- Provision for Central Heating
- Utility Room
- Water Heater
- EPC Energy Class: Pending

Outdoor Features

- Barbecue area
- Rear Garden
- Solar System
- Standard Garden

Description

Lovely 3 Bedroom Semi-Detached House For Sale in Emba, Paphos

3 Bedrooms (1 Master)

2 Bathrooms

1 Ensuite + 1 Family Bathroom + 1 Guest W/C

165m² of Covered Area

219m² of Plot Size

Covered Parking

BBQ Area

Storage Room

Utility Kitchenette

Materials of High Quality with Luxurious Finishes

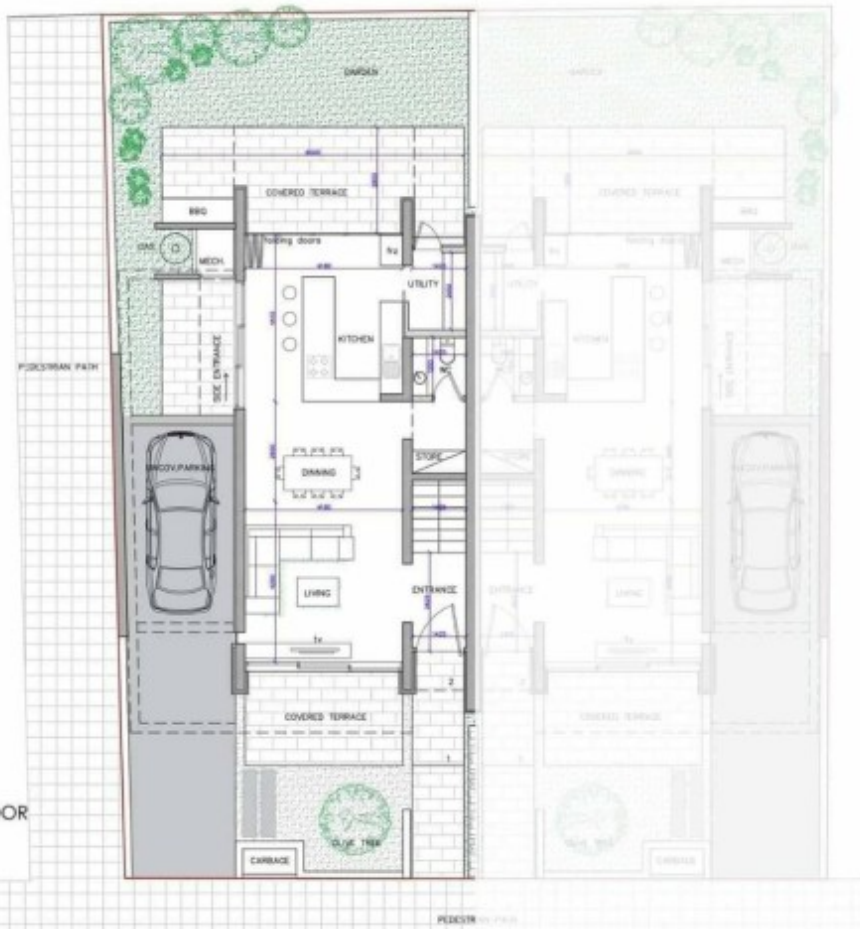
Peaceful location close to all the necessary amenities

This House is excellent for permanent living

Contact us for full information and for a private viewing!







GROUND FLOOR
Scale: 1:100

PROPERTY 1

PLOT AREA: 219 sq.m

CORNER PLOT

GROUND FLOOR BUILDING AREA: 75sq.m

COVERED VERANDAS: 14sq.m

FACILITIES:

ENTRANCE HALL: 3.5 sq.m

LIVING ROOM: 17 sq.m

DINNING: 11 sq.m

KITCHEN : 20 sq.m

UTILITY-KITCENETTE: 3 sq.m

GUEST WC

EXTERNAL BBQ

STORE



FIRST FLOOR
Scale: 1:100

PROPERTY 1

PLOT AREA: 219 sq.m

CORNER PLOT

FIRST FLOOR BUILDING AREA: 90sq.m

FACILITIES:

MASTER BEDROOM with ENSUITE: 28 sq.m

BEDROOM 1: 12.5sq.m

BEDROOM 2: 16.5 sq.m

BATHROOM : 5.5 sq.m