

# Residential Land 26,828 SQM For Sale

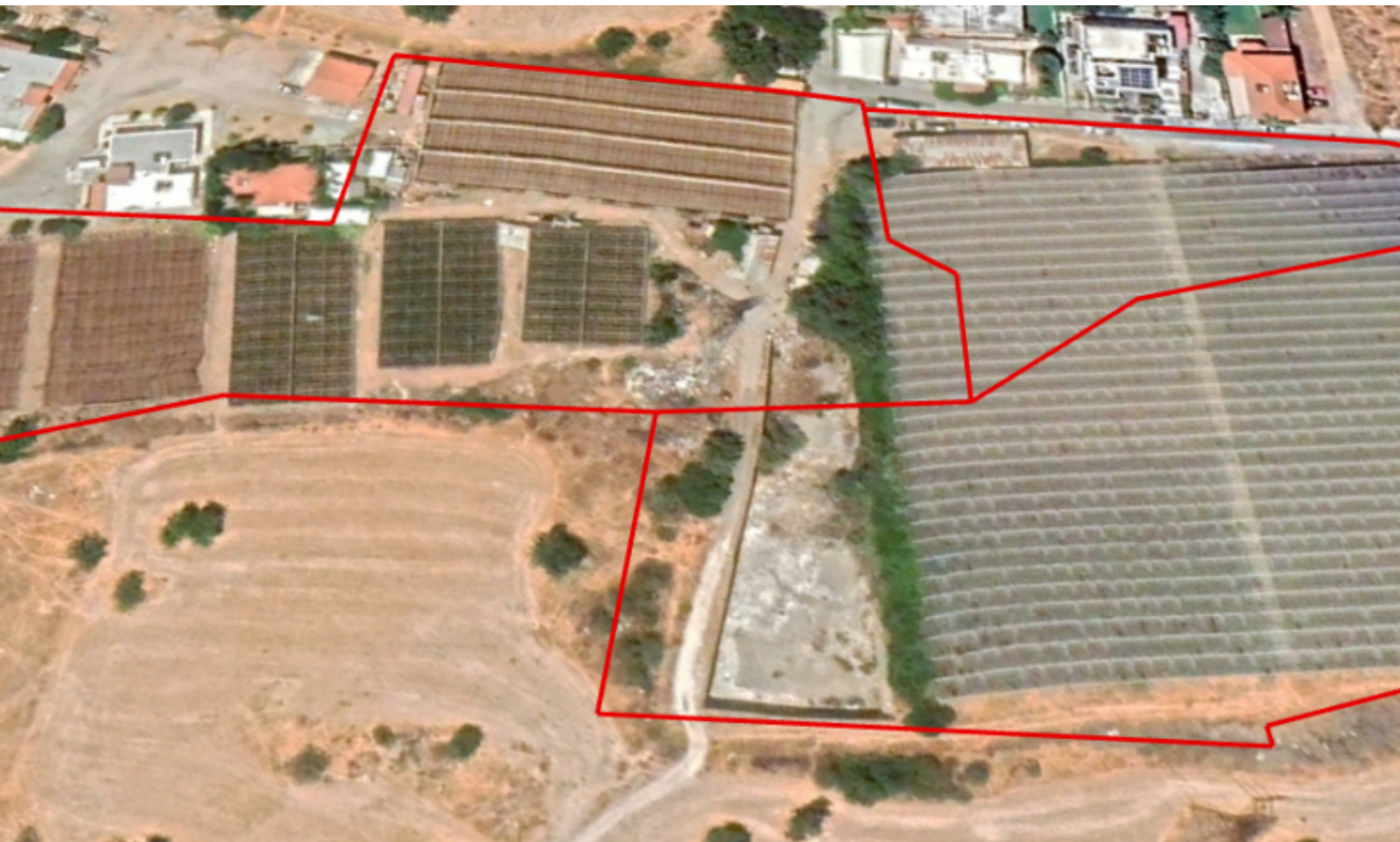
**€8,200,000 Negotiable**

Pano Polemidia, Limassol

## Key Facts

- Residential Land
- 26,828 m<sup>2</sup> Land Size
- 80% Building Density
- Site Coverage: 45%
- Floors: 3
- Height: 13.5m
- Title Deed: Available

**ID: 28713**



# Infrastructures

- Electricity
- Road Access
- Telecommunications
- Water

## Description

Huge Residential Land Parcel For Sale in Pano Polemidia, Limassol!

Located close to the general hospital and many amenities!

Situated in a family-friendly neighborhood

In addition, it enjoys excellent access to the highway and the city center!

26,828m<sup>2</sup> of Land area

Around 128m of Road Frontage

80% of Building Density

45% of Site Coverage

Up to 3 floors and a height of 13.5m

Access to a registered road

All development infrastructures are in place

This land parcel is suitable for the division of plots or for a large residential development!

Contact us for full information and for a private viewing!