

Residential Land 3,011 SQM For Sale

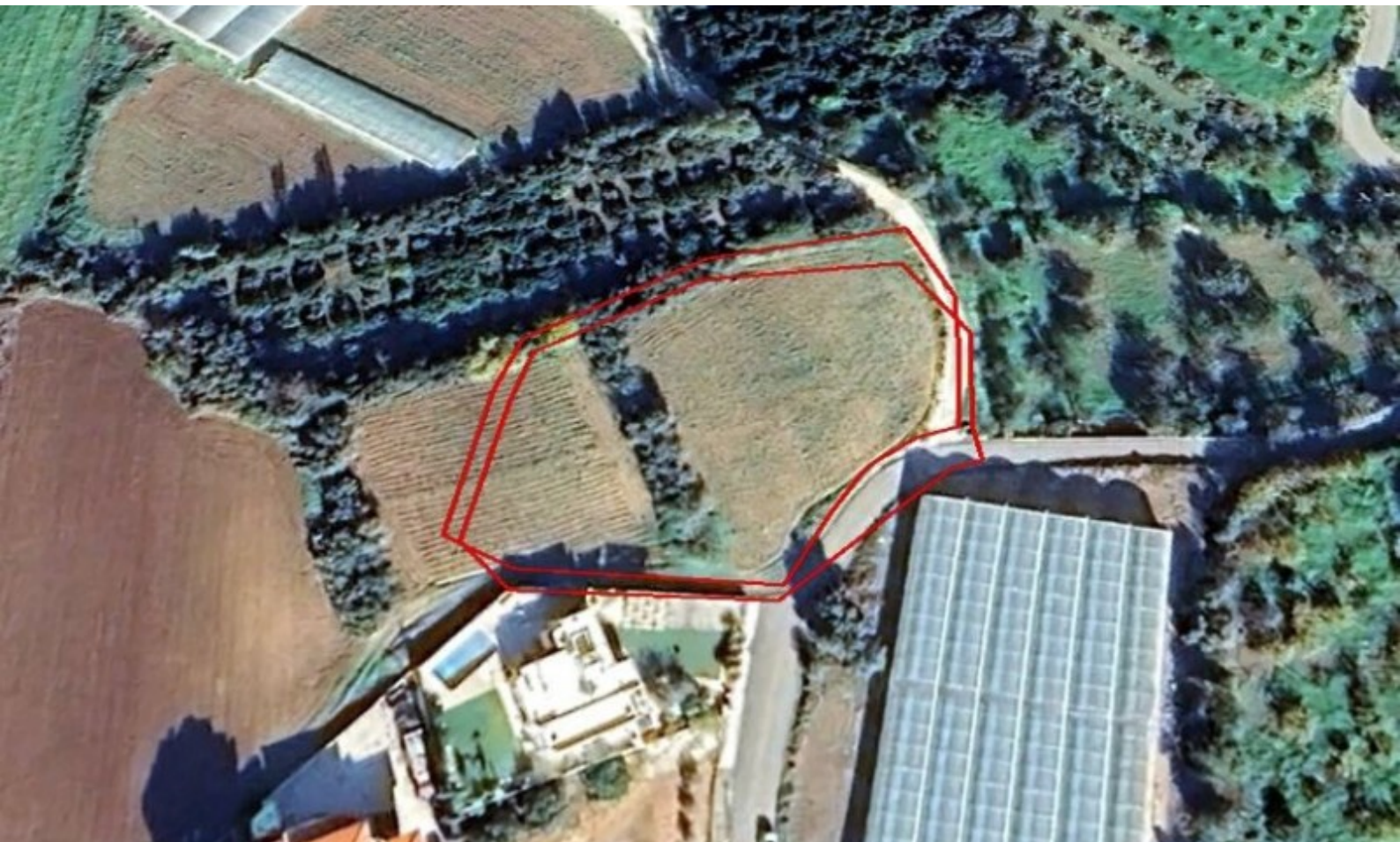
€134,000 Negotiable

Agia Marina Chrysochous, Paphos

Key Facts

- Residential Land
- 3,011 m² Land Size
- 90% Building Density
- Site Coverage: 50%
- Floors: 2
- Height: 8m
- Title Deed: Available

ID: 31765



Infrastructures

- Electricity
- Road Access
- Telecommunications
- Water

Description

Residential Land Parcel For Sale in Agia Marina Chrysochous, Paphos

Located in a peaceful and attractive environment on the outskirts of Paphos

It has close proximity from the sea and amenities!

In addition, it is just a short drive from Polis Chrysochous town center!

3,011m² of Land area

Around 36m of Road Frontage

90% of Building Density

50% of Site Coverage

Up to 2 floors and a height of 8.3m

Access to a registered road

All development infrastructures are in place

This land is excellent for residential development

Contact us for full information and for a private viewing!