

# Residential Land 8,027 SQM For Sale

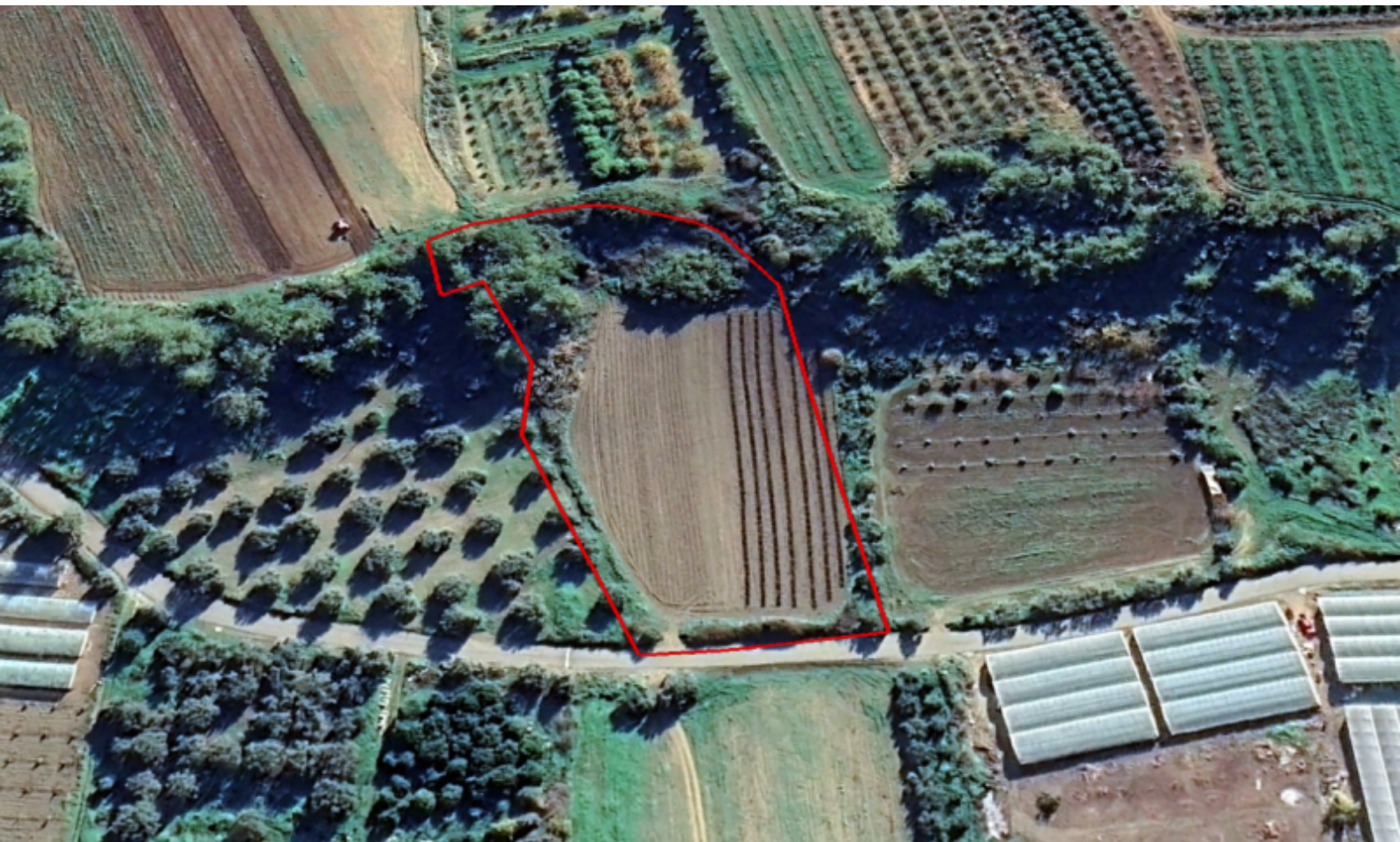
**€805,000 Negotiable**

Gialia, Paphos

## Key Facts

- Residential Land
- 8,027 m<sup>2</sup> Land Size
- 30% Building Density
- Site Coverage: 20%
- Floors: 3
- Height: 13m
- Title Deed: Available

**ID: 35625**



# Infrastructures

- Electricity
- Road Access
- Telecommunications
- Water

## Description

Large Residential Land Parcel For Sale in Gialia, Paphos

Located in a peaceful and natural environment around 3km from the beach

It boasts easy access to the Pomos -Polois connecting road

8,027m<sup>2</sup> of Land area

Around 55m of Road Frontage

30% of Building Density

20% of Siet Coverage

Up to 3 floors and a height of 13.1m

Access to a registered road

All development infrastructures are in place

This land is suitable for residential development in the divisions of plots

Contact us for full information and a private viewing!