

Residential Land 809 SQM For Sale

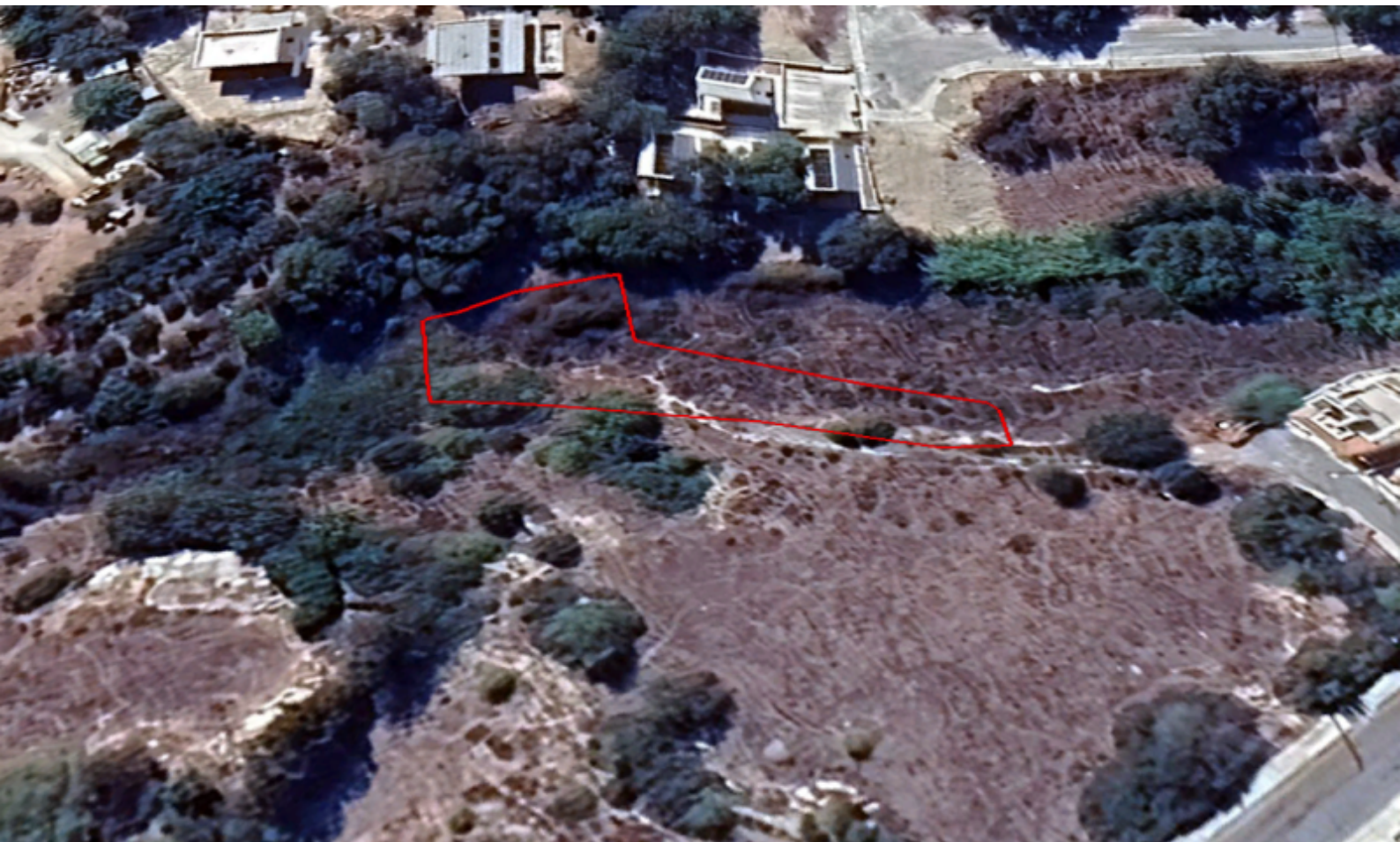
€85,000 Negotiable

Konia, Paphos

Key Facts

- Residential Land
- 809 m² Land Size
- 60% Building Density
- Site Coverage: 35%
- Floors: 2
- Height: 10m
- Title Deed: Available

ID: 37149



Infrastructures

- Electricity
- Road Access
- Telecommunications
- Water

Description

Residential Land Parcel For Sale in Konia, Paphos

Located in a peaceful and attractive environment

It has excellent access to the community center and amenities

In addition, it is only a short drive from the highway and the entrance to the city center!

Cul-de-sac!

Next to a green area

809m² of Land area

Around 7m of Road Frontage

60% of Building Density

35% of Site Coverage

Up to 2 floors and a height of 10m

Access to a registered road

All development infrastructures are in place

This land is suitable for residential development

Contact us for full information and a private viewing